

Eastern Shore

HITCHING

POST

THE SHORE'S ONLY LOCALLY OWNED NEWSPAPER



Libertino Lanes Is a Leisure Gem

By Amanda Mehall

Among the small back-road neighborhoods of Chincoteague sits a modestly sized bowling alley on Willow Street. Its plain beige exterior hides a true gem filled with bright, glow-in-the-dark carpet, a claw machine, eight bowling lanes and countless memories.

Passing by, you can't miss the big sign, "Bowling Center, Libertino Lanes, Open 7 days a week."

Owners Richard and Lynn Libertino opened the place for business 11 years ago and built their bowling alley in a building that once housed a shirt factory, a bicycle repair shop and indoor flea market.

"I found the lanes and equipment on eBay for \$102.50," Richard Libertino boasted.

Richard and Lynn Libertino mapped out the layout of the bowling alley and hired contractors to install the lanes purchased from Eastern Kentucky University in November of 2006, and they have hosted parties, bowling leagues and even Special Olympics bowling games ever since.

The couple said they've both been bowling their whole lives, and Richard Libertino said one of his first jobs was setting up duckpins in a three lane, nameless bowling alley in Fairchance, Pa.

"Back then we got 10 cents a game and had to split it three ways," he said.

While he was setting up the pins, the owners let him bowl for free. He practiced routinely and started getting the hang of it. When he was 13, he joined his first league here and stayed with it for five years.

Similarly, Lynn Libertino said she remembers spending her childhood in a bowling alley in her hometown of New Castle, Del.

"My family [bowled]. I grew up in a bowling center. I met a lot of great people there," she said, and added her first job was in her local bowling alley's snack bar.



Photo courtesy of Libertino Lanes

Four of Libertino Lanes' eight bowling lanes. The bowling center is on Willow Street.

Having many fond memories of the sport, Richard Libertino said he debated the idea of opening up his own alley for about 10 years after his time in the military.

"I joined the Coast Guard when I was 19 years old and came down here. This was my first duty station," he said.

Libertino served for four and a half years,

started a family here and decided to stay on the island. The couple then became small business owners. Richard Libertino then opened his shop, Libertino Auto Repair on Chicken City Rd., where he spends most of his days while Lynn Libertino works the front desk, snack bar and cleans at the bowling center.

(Continued on Page 5)



Photos by Linda Cicaira

Summer Scenes

Enjoy these summer scenes captured by Post photographer Linda Cicaira.



Kool Ford Outlet Center



Sportrac

2001 Explorer Sportrac **\$4,980**
4X2, Lowner, Runs Great

2003 Honda Odyssey **\$4,995**
Loaded, Runs Great

2002 Honda Accord **\$4,860**
Silver, 4-Door, Looks Great, Finance Available

2013 Nissan Sentra **\$8,295**
Red, 88k Miles, Finance Available

2008 Hyundai Accent **\$3,995**
5 Speed, A/C, Great MPG

2007 Ford Explorer **\$8,980**
XLT, 4X4, Gray

2007 Ford Mustang **\$6,995**
V6, Auto, Red and Ready



07 Mustang

2005 Mercury Mariner **\$6,920**
Small SUV, Clean, Red, 67k Miles

2010 Ford Ranger **\$7,495**
Supercab, White, 135,000 Miles

2010 Ford Escape **\$7,995**
Limited, Black, Loaded, 123k Miles

Kool Ford Certified w/ Factory Warranty

2014 Focus
SE Red, 69k Miles
\$9,995

2014 Taurus
Limited, 65k Miles
\$12,995

2013 F150
Crewcab, FX4
\$25,995

2014 F150
STX, 4X4, Cab
\$22,995

2016 Explorer
White, XLT, Under 20k Miles
\$27,888

2014 Escape
SE, 4X4
\$12,995

2015 Focus Se
White, 32k Miles
\$11,995

2013 Focus SE
Hatchback, Blue
\$9,995

2016 Lincoln
MKZ, Loaded
\$23,980

2015 Ford Fusion
SE, Gray, 68k Miles
\$12,995

2015 Escape
SE, Silver, 69k Miles
\$12,995

2014 Explorer
4X2, Base, 1 Owner
\$18,980

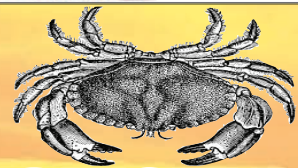
Kool Auto
302-0313

31066 Lankford Hwy., Keller
www.koolautomotive.com

Kool Ford
787-1209



Historic Downtown Shopping & Restaurant District



DON'S SEAFOOD RESTAURANT

Established 1973 • In the Heart of Downtown
4113 Main St. • Chincoteague Island, Va
757-336-5715

Flying Fish Gallery

Featuring 100+ Local and National Artists an eclectic mix of Fine Art,
* Glass * Pottery * Jewelry

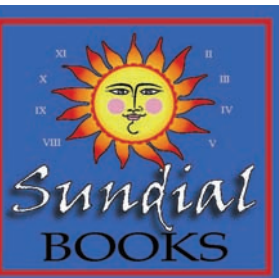
4088 Main St. Chincoteague VA. 23336
757 336-1731

& D L

Cocktail Lounge & Raw Bar

1

4113 Main St. Chincoteague, VA



New, Local, Used, Collectible & E-Books

New & Used CD's
Gifts & Local Art
Magazines

OPEN ALL YEAR

(757)336-5825 • www.sundialbooks.net
4065 Main St., Chincoteague Island, VA 23336



Bad Ponies

Studio & Gallery

4044 Main St. Chincoteague, VA 301.481.7263



WINE, CHEESE, & MORE

Wine - Gourmet Edibles - Craft Beer
Fudge - Coffee & More

4103 Main Street Downtown Chincoteague (757)336-2610



Chincoteague Island Arts Organization

The Island Theatre

- Summer/Fall - first run movies
Winter/Spring - arts programming
- The Annex
- A smaller space for year-round concerts, talks, films and more.

Check www.ciarts.org for upcoming events

4074 Main St., Chincoteague, VA 23336



Katherine Kiss 4072 Main St. 757-709-2571

Island Butterfly JEWELRY & JUBILEE



The island's most unique selection of jewelry, gifts, and handmade!!

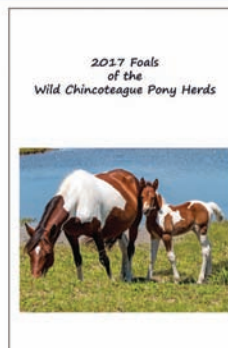
4107 Main Street
Chincoteague Island
(757) 894-2512

ShopsIslandButterfly.com

DSC Photography's
2017 Fools Booklet
available at



Blue Crab Treasures
4080 Main Street
757-336-5507



The Silver Cricket Great Finds

Antiques
Jewelry
& More
4089 Main St.
Chincoteague, VA 23336
757-336-0515



Toys, Games, Kites,
Puzzles... Fun for everyone!!

ECLECTIC BEACHCOMBER

Features Local Artisans

4019 Main St. Chincoteague • 434-222-1214

Day Trips and Side Trips Around the Eastern Shore

Aug. 18 - 19

Movie: "Atomic Blonde," 7 p.m., Mar-Va Theater, Pocomoke, Md., \$5 admission, www.marvatheater.com/events

Play: "Sherlock Holmes: The Loss at White Chapel." 8 p.m., North Street Playhouse, 34 Market St., Onancock, Admission: \$20 adults, \$18 seniors, \$10 students, to reserve tickets call (757) 787-2050 or visit www.northstreetplayhouse.org

Aug. 18-20

Movie: "Dunkirk," 8/18 and 8/19 at 7 p.m., 8/20 at 4 p.m., Roseland Theatre, 48 Market St., Onancock, adults \$9, seniors \$8, children (12 and under with parent) \$7.50, 757-787-2010 or 757-787-2209, www.roselandonancock.com

Friday, Aug 18

Concert: Le Hotclub de Biglick, 7 - 9:30 p.m., Palace Theatre, 305 Mason Ave., Cape Charles, free admission, 757-331-2728, www.artsentercapecharles.org

Concert: Syd Straw, 8 p.m., St. James Episcopal Church, 23395 Drummond-town Rd., Accomac, dinner on the grounds by Chef Cecilio Balmoria precedes concert at 6 p.m., dinner is \$8 per person; concert is \$20 per person, 757-787-4892, <http://stgeorgesva.org/upcoming-events.html>

Saturday, Aug. 19

Virginia Eastern Shorekeeper Clamboree, 5 p.m., Eastern Shore Country Club, 14421 Country Club Rd., Melfa, Tickets \$65, 757-787-1525 <https://www.facebook.com/events/992283234237316/>

Thursday, Aug. 24

Movie: "Citizen Kane," 7 - 9 p.m., Palace Theatre, 305 Mason Ave., Cape Charles, \$5 admission, 757-331-2728, www.artsentercapecharles.org

Friday, Aug. 25

4th Friday Street Festival, 5 - 8 p.m., downtown, Pocomoke, Md.

Concert: Rootstone Band, 7 - 9:30 p.m., Palace Theatre, 305 Mason Ave., Cape Charles, free admission, 757-331-2728, www.artsentercapecharles.org

Saturday, Aug 26

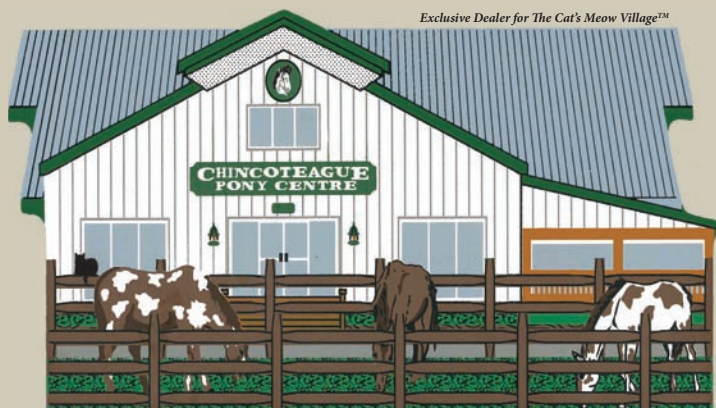
Boat Docking Challenge, 11 a.m., Pocomoke, Md., Waterfront near Riverside Grill

Get Outdoors Day, 10 a.m. - 2 p.m., Hazel Outdoor Discovery Center, 4025 Cooper Rd., Eden, Md., free lunch, water and soft drinks for all; free drawstring backpacks for first 400 children, 443-614-0261, dlitedirector@comcast.net

CHINCOTEAGUE PONY CENTRE

Chicken City Road
Chincoteague Island,
Virginia 23336

Phone: 757-336-2776



Exclusive Dealer for The Cat's Meow Village™

PONIES FOR SALE
www.chincoteague.com/ponycentre • ponycntr@verizon.net



Gift Shoppe,
Pony Rides
and Lessons

Misty of
Chincoteague
Descendants

Carriage
Displays, Misty
Memorabilia
and Much
More!

Carodan Farm Wool Shop

Chincoteague Island, Virginia
(800) 985-7083
www.carodanfarm.com



7151 Horseshoe Dr.
757-336-0536
Tuesday - Saturday 10-3
Thursday 10-8

KEN - DO'S RV REPAIR SERVICE

Serving the Delmarva Peninsula
to Chesapeake, VA.

Restoration • Service • Total Roof Repair
AC/Electrical • In Stock Parts
Winterization Specials • RV Detailing

Mobile Service Available

410-957-2500

We are sponsored by most local campgrounds.

Homemade Ice Cream



6243 Maddox Blvd. • (757) 336-6236



www.islandcreamery.net

Find us:

[islandcreameryva](https://www.instagram.com/islandcreameryva)



~ Libertino Lanes ~ (Continued From Front)

From owning the repair shop, Richard met the former owner of the bike shop and flea market because he was one of his customers, and Richard said he would always pester the owner to give him the space someday.

“This was the only building big enough at the time on the island for eight lanes,” Richard said.

While the building may be quaint, the Libertinos pack it with their own unique flare to cater to their customers. Businesses have hosted extravagant parties here, “rock and bowl” turns the music up and illuminates all the colored lights and Libertino Lanes even has its own game of chance with its one special bowling pin.

“There’s one red pin and if it comes up as the head pin and they get a strike, they get a free game,” Lynn Libertino said.

Libertino Lanes also hosts a league on Wednesday nights. They

invite anyone to come bowl for 16 weeks, and if a bowler likes it, memberships can be renewed for another 16 weeks. Normally, bowling leagues are 32 weeks, but the Libertinos felt like this was too much of a commitment and they wanted a shorter league to welcome all bowlers.

Bowlers of any age and skill level are welcome at Libertino Lanes, as the Libertinos said they particularly enjoy hosting children’s parties.

“These little kids come in here for their birthday parties and it’s like they’ve never picked up a bowling ball before,” Richard Libertino said. “I’ve seen some of them run all the way down to the pins.”

Lynn Libertino added she would love to start a youth league if enough interest was generated.

Libertino Lanes may be a small, cozy bowling alley, but their lanes meet the Professional Bowlers Association’s standards and Lynn Libertino encour-



Photo courtesy of Libertino Lanes

Libertino Lanes Bowling Center in Chincoteague is located in a building that once held a shirt factory and a flea market, among other uses.

aged everyone to stop by anytime.

“Don’t ever think we’re going to be

too busy,” she insisted, adding there

will always be room for any bowler.

THE CRAB SHACK

FRESH LOCAL SEAFOOD

- FRESH CAUGHT FISH OFFERED DAILY
- FRESH BURGERS AND SALADS

INDOOR & OUTDOOR SEATING
6560 MADDOX BLVD.
757-336-1880

WINNER 2013, 14 & 25
CHILI CHOWDER COOK OFF!
OPEN DAILY 12PM - 9PM

757-336-5348
LOCATED NEXT TO SUBWAY

Fun On Wheels

Scooters, Trikes, Bikes, Street LSV
Island Buggies & Gas Powered Reepers

Family Owned/Operated
6450 Maddox Blvd.
www.FunOnWheelsCI.com

SMOKEY'S

PIT BEEF • PIT TURKEY
PIT HAM • BEEF BRISKET
PULLED PORK • BURGERS
FRIES AND MORE!

NEXT TO CAPTAIN STEVE'S
757-336-6425
6527 MADDOX BLVD., CHINCOTEAGUE ISLAND

Chincoteague Cultural Alliance
6309 Church Street

SAT AUG 19 ISLAND COFFEEHOUSE

7 pm Old-Time music by two great duos
American roots music from fiddle and banjo tunes to blues and gospel songs
\$5, \$3/22 and under, drinks & snacks available, doors open at 6:30

FREE IN ROBERT REED PARK

Aug 24 - Cinema: "Defending Your Life"
Aug 25 - Concert: Blue Aces Air Force Band
Aug 26 - Concert: CAISO Steel Band

Want to advertise in the Hitching Post?

Call Sam at 757-789-7678
or e-mail: sam@eastern-shorepost.com

HOT STUFF! OF CHINCOTEAGUE

OVER 500 KINDS OF HOT SAUCE!
INCLUDING

WILD PONY HOT SAUCE

20TH SEASON 1997-2017

SAMPLE OUR NEW SAUCES FOR 2017

6273 Cropper St. • 336-3118



Fishing from the Shore

By Bill Hall

If you want to know how poor the offshore fishing has been off DelMarVa this summer, all you have to do is look at the results of last week's White Marlin Open out of Ocean City, Md. Although the top three white marlin weighed in were impressive in size, especially the 95-8 winner, which will be worth \$1,654,800.00, assuming the winner passes all of the polygraph tests, etc., the number and size of the other species were somewhat of a disappointment.

When you consider that the tournament drew 353 participating vessels, each fishing three days, that equates to over 1,000 fishing trips, each seeking a share of the largest fishing tournament purse on the planet. Yet even with many of the top tournament captains in the world at the helms, the fleet failed to catch a single qualifying blue marlin, only one qualifying dolphin (mahi mahi), only one qualifying shark, three qualifying wahoo and the largest tuna weighed only 68-8 pounds. There was a lot more fishing for trophy catches than catching



Photo courtesy of Captain Steve's Bait and Tackle Brett Horne and Nik Zimmerman teamed up to catch this 8-foot lemon shark during a night time fishing adventure on Assateague. The big fish took three hours to land and was later released.

in this year's event.

Here is what's happening a little closer to home.

Lower Shore – Chris Snook, of Chris' Bait & Tackle, reported that flounder fishing improved this week with fish nearing the 6-pound mark coming from the highrise portion of the Chesapeake Bay Bridge-Tunnel. The fourth island of the span still holds good numbers of gray trigger fish and spadefish. Large red drum are being released over the shoals and along the channel edges up to buoy 36. Croaker catches are coming from the deeper water off the third and fourth islands, while spot numbers are improving along the concrete ships. Due to the cloudy conditions over most of the weekend and into the week, bottom fishing was more productive than sightcasting for cobia. The bayside creeks are starting to see an improvement in the speckled trout catches. The croaker action off Oyster is still spotty at best, with catches coming inside the inlet. The fish are smaller than the croaker that are coming from the bayside.

Wachapreague – Captain Lindsay Paul, at Trident Tackle reported that yellowfin tuna weighing up to 50 pounds and king mackerel were being caught from offshore of 21 Mile Hill to Sam's Hill, while the waters over 21 Mile Hill held mostly false albacore and a few king mackerel. There were reports of a couple of white marlin released further offshore. Captain Paul had not heard of anything being pulled from the wrecks. Inside the inlet, it is the same old story, small flounder with few, if any, meeting the 17-inch minimum size limit.

Chincoteague – The wreck at the Parking Lot is still producing limits of black sea bass, according to Jimmy, at Captain Steve's Bait and Tackle, while chunking in the same area has produced yellowfin tuna up to 55 pounds. Whole squid has been a productive chunking bait for the tuna. Inshore, sharks are still everywhere to be had, including an 8-foot-long lemon shark which was landed after a three hour battle from the beach at Assateague. After a few pictures, the fish was dragged back into the surf and released. Croakers in decent numbers have finally showed up, just in time since the shop is hosting its annual youth croaker tournament this week, the early leader weighed 13.3 ounces and was caught by Ethan Willett. Croaker catches were being in the inlet, the canal and in Chincoteague Channel. Spot remain the most consistent catch in the surf during daylight hours, especially during high tide. Croakers and a few puppy drum are starting to show up in the back creeks with peeler crab being the most productive baits.



Photo courtesy of Captain Steve's Bait and Tackle Ethan Willett jumped out to an early lead with this pair of croakers in the Captain Steve's Bait & Tackle Youth Croaker Tournament.

Donna Rae, at Captain Bob's Marina, reported that determined anglers could still land that elusive keeper flounder if they were willing to wade through all of the undersized flatties. She recommended using a top and bottom rig with a 4-inch Berkley Gulp Swimming Mullet on the bottom and a bull minnow/squid strip on the top hook. For a better shot at putting something in the cooler, she said kingfish (whiting) were still hitting in the area between the canal and buoy #11.

Upper Shore – Captain Matt Abell, of Sea Hawk Sports Center, reported that offshore fishing remained slow but flounder fishing over the rail cars has improved. Spanish mackerel catches this week were made off Pungoteague Creek and up in Tangier Sound. Captain Abell had two charters during the week, releasing both cobia and trophy red drum. Two of the cobia were caught sightcasting for fish that were following rays. The late summer/autumn run of speckled trout appears to have started inside the bayside creeks, with one party caching nine fish measuring up to 22 inches. *Bill Hall was the first Eastern Shore resident to achieve Virginia Salt Water Master Angler Status. He has been named Virginia Saltwater Angler of the Year and Virginia Saltwater Release Angler of the Year. Bill is an I.G.F.A. International Committee Representative and a longtime member of the Virginia Saltwater Fishing Tournament Committee. He is the Virginia Recreation Fishing representative on the ASMFC Striped Bass Management Panel and is a past recipient of the CCA-VA Virginia Outdoor Writer Conservation Leadership Award.*

**T
I
D
E
T
A
B
L
E**

		Friday, Aug. 18		Saturday, Aug. 19		Sunday, Aug. 20		Monday, Aug. 21		Tuesday, Aug. 22		Wednesday, Aug. 23		Thursday, Aug. 24
Seaside	Assateague Beach	H 6:03 p.m. L 11:47 a.m.	H 6:59 p.m. L 12:47 p.m.	H 7:19 a.m. L 1:43 p.m.	H 8:12 a.m. L 2:36 p.m.	H 9:02 a.m. L 3:26 p.m.	H 9:50 a.m. L 4:15 p.m.	H 10:37 a.m. L 5:03 p.m.						
	Chinco Channel	H 6:07 p.m. L 11:46 a.m.	H 6:27 a.m. L 12:46 p.m.	H 7:23 a.m. L 1:42 p.m.	H 8:16 a.m. L 2:35 p.m.	H 9:06 a.m. L 3:25 p.m.	H 9:54 a.m. L 4:14 p.m.	H 10:41 a.m. L 5:02 p.m.						
	Gargatha Neck	H 6:59 p.m. L 12:26 p.m.	H 7:19 a.m. L 1:26 p.m.	H 8:15 a.m. L 2:22 p.m.	H 9:08 a.m. L 3:15 p.m.	H 9:58 a.m. L 4:05 p.m.	H 10:46 a.m. L 4:54 p.m.	H 11:33 a.m. L 5:42 p.m.						
	Folly Creek	H 6:52 p.m. L 12:11 p.m.	H 7:12 a.m. L 1:11 p.m.	H 8:08 a.m. L 2:07 p.m.	H 9:01 a.m. L 3:00 p.m.	H 9:51 a.m. L 3:50 p.m.	H 10:39 a.m. L 4:39 p.m.	H 11:26 a.m. L 5:27 p.m.						
	Wachapreague	H 6:38 p.m. L 11:55 a.m.	H 6:58 a.m. L 12:55 p.m.	H 7:54 a.m. L 1:51 p.m.	H 8:47 a.m. L 2:44 p.m.	H 9:37 a.m. L 3:34 p.m.	H 10:25 a.m. L 4:23 p.m.	H 11:12 a.m. L 5:11 p.m.						
	Quinby Inlet	H 6:03 p.m. L 11:26 a.m.	H 6:59 p.m. L 12:26 p.m.	H 7:19 a.m. L 1:22 p.m.	H 8:12 a.m. L 2:15 p.m.	H 9:02 a.m. L 3:05 p.m.	H 9:50 a.m. L 3:54 p.m.	H 10:37 a.m. L 4:42 p.m.						
	Machipongo	H 6:33 p.m. L 11:55 a.m.	H 6:53 a.m. L 12:55 p.m.	H 7:49 a.m. L 1:51 p.m.	H 8:42 a.m. L 2:44 p.m.	H 9:32 a.m. L 3:34 p.m.	H 10:20 a.m. L 4:23 p.m.	H 11:07 a.m. L 5:11 p.m.						
Bayside	Tangier Sound Light	H 9:39 a.m. L 3:58 p.m.	H 10:44 a.m. L 5:00 p.m.	H 11:43 a.m. L 5:57 p.m.	H 12:35 p.m. L 6:40 a.m.	H 1:24 p.m. L 7:28 a.m.	H 2:10 p.m. L 8:13 a.m.	H 2:54 p.m. L 8:56 a.m.						
	Muddy Creek	H 9:55 a.m. L 4:33 p.m.	H 11:00 a.m. L 5:35 p.m.	H 11:59 a.m. L 6:32 p.m.	H 12:51 p.m. L 7:15 a.m.	H 1:40 p.m. L 8:03 a.m.	H 2:26 p.m. L 8:48 a.m.	H 3:10 p.m. L 9:31 a.m.						
	Guard Shore	H 9:47 a.m. L 4:29 p.m.	H 10:52 a.m. L 5:31 p.m.	H 11:51 a.m. L 6:28 p.m.	H 12:43 p.m. L 7:11 a.m.	H 1:32 p.m. L 7:59 a.m.	H 2:18 p.m. L 8:44 a.m.	H 3:02 p.m. L 9:27 a.m.						
	Chescon. Creek	H 9:22 a.m. L 3:41 p.m.	H 10:27 a.m. L 4:43 p.m.	H 11:26 a.m. L 5:40 p.m.	H 12:18 p.m. L 6:34 p.m.	H 1:07 p.m. L 7:11 a.m.	H 1:53 p.m. L 7:56 a.m.	H 2:37 p.m. L 8:39 a.m.						
	Onancock Creek	H 9:36 a.m. L 4:01 p.m.	H 10:41 a.m. L 5:03 p.m.	H 11:40 a.m. L 6:00 p.m.	H 12:32 p.m. L 6:43 a.m.	H 1:21 p.m. L 7:31 a.m.	H 2:07 p.m. L 8:16 a.m.	H 2:51 p.m. L 8:59 a.m.						
	Pungoteague Creek	H 8:52 a.m. L 3:15 p.m.	H 9:57 a.m. L 4:17 p.m.	H 10:56 a.m. L 5:14 p.m.	H 11:48 a.m. L 6:08 p.m.	H 12:37 p.m. L 6:45 a.m.	H 1:23 p.m. L 7:30 a.m.	H 2:07 p.m. L 8:13 a.m.						
	Nassawadox	H 7:37 a.m. L 1:37 p.m.	H 8:42 a.m. L 2:39 p.m.	H 9:41 a.m. L 3:36 p.m.	H 10:33 a.m. L 4:30 p.m.	H 11:22 a.m. L 5:22 p.m.	H 12:08 p.m. L 6:11 p.m.	H 12:52 p.m. L 6:35 a.m.						
	Occohan. Creek	H 8:16 a.m. L 2:55 p.m.	H 9:21 a.m. L 3:57 p.m.	H 10:20 a.m. L 4:54 p.m.	H 11:12 a.m. L 5:48 p.m.	H 12:01 p.m. L 6:40 p.m.	H 12:47 p.m. L 7:10 a.m.	H 1:31 p.m. L 7:53 a.m.						
	Cape Charles	H 6:26 a.m. L 12:45 p.m.	H 7:31 a.m. L 1:47 p.m.	H 8:30 a.m. L 2:44 p.m.	H 9:22 a.m. L 3:38 p.m.	H 10:11 a.m. L 4:30 p.m.	H 10:57 a.m. L 5:19 p.m.	H 11:41 a.m. L 6:08 p.m.						
	Kiptopeke Beach	H 6:40 p.m. L 12:14 p.m.	H 7:09 a.m. L 1:16 p.m.	H 8:08 a.m. L 2:13 p.m.	H 9:00 a.m. L 3:07 p.m.	H 9:49 a.m. L 3:59 p.m.	H 10:35 a.m. L 4:48 p.m.	H 11:19 a.m. L 5:37 p.m.						

Disclaimer: Tides are provided for information only and are not guaranteed for accuracy.

RENTALS **SALES**

Now Accepting 2018 Listings!

SEASIDE Vacations

Make your Vacation Dreams come true!

844.662.2583

Most experienced Property Managers on Chincoteague Island

MARVA THEATER
Performing Arts Center, Inc.

Atomic Blonde (R)

August 18 & 19 at 7 PM
TICKETS \$5

Visit us on Facebook

103 Market St., Pocomoke, MD 21851
410-957-4230 www.marvatheater.com

aj's ... on the creek

Casually
Elegant
Dining

Specialties: Seafood, Hand Cut Steaks, Seafood Pastas & Lamb

Dine inside or outside on our screened in porch

757-336-5888

6585 Maddox Blvd. Chinteaque

www.ajsonthecreek.com

C. LEE HAULING
 Top Soil, Fill, Sand,
 Gravel, Lot Clearing
 and Demolition.
757-710-3032
Greenbush, VA

Want to
 advertise in the
Hitching Post?
 Call **Sam** at
757-789-7678
 or e-mail:
sam@eastern-
shorepost.com

Toys, Games, Kites,
 Puzzles... Fun for everyone!!
ECLECTIC
BEACHCOMBER
 Features Local Artisans
 4019 Main St. Chincoteague • 434-222-1214

Captain Timothy Hill House
 5122 Main Street
 Come Visit
 Island's Oldest
 Home
 • Open to the Public
 Fridays
 1pm-3pm
 • Visit us
 online at:
 captaintimothyhillhouse.com
 Listed on the
 Virginia Landmarks Register & National
 Register of Historic Places



2017 TROLLEY SCHEDULE

GREEN ROUTE											RED ROUTE										
EVENING HOURS ONLY											EVENING HOURS ONLY										
Pine Grove	5:02		6:02		7:02		8:02		9:02	10:02	Pine Grove	5:15		6:15		7:15		8:15		9:15	
Maddox Blvd. & Deep Hole Rd.	5:05	5:35	6:05	6:35	7:05	7:35	8:05	8:35	9:05	9:35	10:05	High School	5:20		6:20		7:20		8:20		9:20
Main St. & Church St.	5:08	5:38	6:08	6:38	7:08	7:38	8:08	8:38	9:08	9:38	10:08	Main St. & Church St.	5:22	5:51	6:22	6:51	7:22	7:51	8:22	8:51	9:22
Beebe Rd. & Ridge Rd.	5:13	5:43	6:13	6:43	7:13	7:43	8:13	8:43	9:13	9:43	10:13	Beebe Ranch Turnaround		5:59		6:59		7:59		8:59	
Memorial Park	5:17	5:47	6:17	6:47	7:17	7:47	8:17	8:47	9:17	9:47	10:17	Beebe Rd. & Ridge Rd.	5:30		6:30		7:30		8:30		9:30
Pony Centre	5:21	5:51	6:21	6:51	7:21	7:51	8:21	8:51	9:21	9:51	10:21	Memorial Park	5:34		6:34		7:34		8:34		9:34
Museum of Chincoteague Is.	5:25	5:55	6:25	6:55	7:25	7:55	8:25	8:55	9:25	9:55	10:25	Museum of Chincoteague Is.	5:38	6:08	6:38	7:08	7:38	8:08	8:38	9:08	9:38

GREEN ROUTE: Designated "Free Rides" courtesy of the Chincoteague Chamber of Commerce
 SEPT.: 30th - Chili Chowder Cook Off - 10am - 10:30pm
 OCTOBER: 7th - Oyster Fest - 10am - 10:30pm (Ride free 10am - 5pm)

RED ROUTE: Carnival*, Pony Swim, Pony Auction, Pony Swim Back Extended Hours
 JULY: 1st - Fireworks - 5pm - Midnight 26th - Pony Swim - TBA - Midnight
 JULY: 27th - Pony Auction - 7am - 1pm** 28th - Pony Swim Back - 6am - 1pm**
 ** Last Call for Trolley during Carnival is 11:00pm

ROUTE DAYS OF OPERATION

- The **Green Route** will run the 3rd of June, and will run continuously June 6th through September 9th. The **Green Route** route will be run Friday and Saturday, starting September 15th through October 14th.
- The **Red Route** will begin on June 5th and will run every day through August 31st.

Trolley fare is 25 cents per person per ride. Exact change is appreciated. Free ride tokens are available at local businesses. Drivers do not carry cash. As a courtesy, please: no alcohol, no tobacco, and no pets. The Pony Express is seasonal transportation service provided by the Town of Chincoteague. This service is open to the public. Many of the motels, restaurants, shops, parks, recreational areas, ice cream parlours, and campgrounds are along our routes. Trolleys are equipped with wheelchair lifts. To inquire about Americans with Disabilities Act public transportation option, please contact the Town of Chincoteague during business hours at 757-336-6519, or The Pony Express at 757-854-8572, after 5 p.m.

What to do this week on and around Chincoteague

Friday, Aug. 18, Aug. 25

Captain Timothy Hill House, open to public Fridays 1 - 3 p.m., 5122 Main St., Chincoteague, free admission (donations welcome), call 973-831-5961, www.captaintimothyhillhouse.com

Rocketry, 2 p.m., NASA Wallops Visitor Center, free admission, www.nasa.gov/centers/wallops/visitorcenter

Friday, Aug. 18

Serving Up The Shore, 6 p.m., Chincoteague Bay Field Stations, 34001 Mill Dam Rd., Wallops Island, purchase tickets at www.cbfieldstation.org

Saturday, Aug 19

Farmers and Artisan Market, 9 a.m. until 1 p.m., Chincoteague Cultural Alliance, 6309 Church St., www.chincoteagueculturalalliance.org

Imagination Playground, 11 a.m., approximately 60 minutes, geared to ages 6-9, NASA Wallops Visitor Center, Building J20, Route 175, Chincoteague Rd., Admission: Free, www.nasa.gov/content/wallops-visitor-center

Peculiar Planet, 2 p.m., NASA Wallops Visitor Center, www.nasa.gov/content/wallops-visitor-center/public-programs

CCA Island Coffeehouse, 7 p.m., Chincoteague Cultural Alliance, 6309 Church St., \$5 cover charge (\$3 for 21 and under with ID), www.ChincoteagueCulturalAlliance.org

Sunday, Aug. 20

"Horsing Around" Art Show, 3 - 5 p.m., Kitchen Gallery, Chincoteague Cultural Alliance, 6309 Church St., www.chincoteagueculturalalliance.org

Monday, Aug. 21

Total Solar Eclipse Viewing Event, noon - 4:30 p.m., NASA Wallops Flight Facility Visitor Center, www.chincoteaguechamber.com/events

Tuesday, Aug. 22

Tuesday Nights at the Museum: Where Island Tales Are Told, 7 p.m., \$4 for adults, free for children, active military, and museum members, Chincoteague Museum, 7125 Maddox Blvd., chincoteaguemuseum.com/programs

Wednesday, Aug. 23

Farmers and Artisan Market, 9 a.m. until 1 p.m., Chincoteague Cultural Alliance,

6309 Church St., www.chincoteagueculturalalliance.org

Engineering Challenge, 2 p.m., registration begins 1 hour prior to the program at the Visitor Center front desk, approximately 60 minutes, recommended for ages 6 and up, NASA Wallops Island Visitor Center, <https://www.nasa.gov/content/wallops-visitor-center/public-programs>

Game Night, 6 - 8 p.m., The Chincoteague Center, 6155 Community Dr., \$3 per person or \$8 per family, snacks and drinks for sale, 757-336-0614, www.thechincoteaguecenter.com/meet-greet-open-house

A Bucket of Blood, 8 p.m., Theatre Annex, 4076 Main St., \$5 admission (includes small drink and snack), www.chincoteagueislandarts.com

Thursday, Aug. 24

Movies in the Park: "Defending Your Life," film begins at dusk, Chincoteague Cultural Alliance, Robert Reed Downtown Park, free admission, www.ChincoteagueCulturalAlliance.org

Friday, Aug. 25

Music At The Dock: Blue Aces, 7 p.m., Chincoteague Cultural Alliance, free admission, www.ChincoteagueCulturalAlliance.org

Saturday, Aug. 26

Music At The Dock: CAISO Steeldrum Band, 7 p.m., Chincoteague Cultural Alliance, free admission, www.ChincoteagueCulturalAlliance.org

Ongoing

Museum of Chincoteague Island, Tuesday - Sunday, 11 a.m. - 5 p.m., 7125 Maddox Blvd., 757-336-6117, www.chincoteaguemuseum.com, Adults \$4, under 12 free.

Chincoteague National Wildlife Refuge, 6 a.m. - 8 p.m. daily, Herbert H. Bateman Educational and Administrative Center open daily, 9 a.m. - 4 p.m. 757-336-6122, www.fws.gov/refuge/chincoteague/

Assateague National Seashore, Toms Cove Visitor Center, 9 a.m. - 4 p.m., 757-336-6577, www.nps.gov/asis/index.htm

NASA Visitor Center, Tuesday - Saturday, 10 a.m. - 4 p.m., 757-824-1344, www.nasa.gov/centers/wallops/visitorcenter, Admission: Free

All listings are provided for information only; call or check websites for updates and confirmation.

SEASIDE *Properties* "Racing Moon Landing"



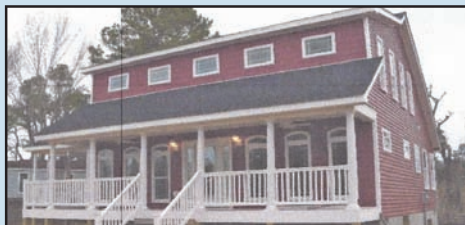
757.336.6000

www.seasidepropertiesllc.com

6 Custom Built Homes

New Chincoteague Island Community, many upgrade options to choose from, base price range of \$360,000 to \$475,000, 1,500-2,200 Sq. Ft., 3-4 bedrooms 2+ baths, underneath parking, large lots, community pier.

Similar Houses



Other Exclusive Properties

Wattsville Area-MLS #45735
Owner Agent, Price: \$310,900



Large 3+ bedroom, 4 bathroom home w/granite counter tops, many upgrades, 2 car oversized attached and 12x24 detached storage building with electric, screened in porch, private setting, Geo-thermal, 8 minutes to Chincoteague or 5 to Wallops.

Seaside Properties, LLC

Has many lots and homes to offer on and off the island.



Call us today to schedule your appointment to see what we have to offer for all of your real estate needs.



Coffeehouse to Feature Music of Artists' Southern Roots

Submitted Article and Photo

The Island Coffeehouse will be host to an evening of old time traditional music as it welcomes back Wayne and Margaret Martin and Bill Schmidt and Ann Porcella on Aug. 19.

Wayne and Margaret Martin's musical mentors belonged to a generation that played for tobacco farm frolics and rural square dances, for medicine shows and live country radio. "We try to honor these rich musical traditions in our playing," Wayne Martin said. "We strive for the energy of breakdowns and hornpipes, salted with a good dose of the blues." His Georgia roots include shape-note singers, country songwriters and fiddlers. A North Carolina native, Margaret Martin played for years with "Hash House" Harvey Ellington and "Starvin" Sam Pridgen, original members of the 1930s-era Tobacco Tags and the Swingbillies.

The Martins are featured on the recording "Birdie" with their dear friend Craig Johnson and have performed at festivals, house concerts and music events across North Carolina and beyond including the Swannanoa Gathering, MerleFest and the Festival of American Fiddle Tunes in Port Townsend, Washington.

Opening for the Martins will be Ann Porcella and Bill Schmidt, each of whom has extensive history in the realm of traditional music. Porcella's music is highly informed by the gospel music she learned at home and in church. She is a member of The Blue Moon Cowgirls. Schmidt was a founding member of the Double Decker Stringband. He is also a member of the Hoover Uprights, two-time winners at the Appalachian String

Band Festival in Clifftop, W.Va. Their set will include a wide range of roots music: gospel, fiddle tunes, and heart songs accompanied by guitar, banjo, and fiddle. Look for Chincoteague's John Beam to sit in on some tunes.

The Featured Artist this month is Lucy Roehm. She is a local artist who resides in Chincoteague and the Philadelphia area. She enjoys painting around Chincoteague and Assateague islands throughout the year and participates in the Chincoteague Cultural Alliance Plein Air event held every September on the island.

Doors open at 6:30 p.m.; performances begin at 7 p.m. Admission is \$5 for adults; \$3 for students 22 and under. Everyone is welcome.

The Island Coffeehouse is held on the third Saturday at 6309 Church St. and is sponsored by the CCA. Each month, the Coffeehouse presents a variety of arts in a listening room environment. Enjoy performances by acoustic musicians and spoken word artists, view some visual art, and savor light snacks and drinks in a convivial atmosphere. More information is available at <http://www.chincoteagueculturalalliance.org/>



Wayne and Margaret Martin bring "old time" music to the Island Coffeehouse on Aug. 19.



Photograph by Sam Sellard

Future Fire Fighters' Home

Progress continues on the new firehouse on Chincoteague. The volunteer fire company broke ground on April 10 on the \$4.3 million structure and was expected to take 13 months to complete.

School Open House Schedule

Chincoteague Elementary School

Friday, Sept. 1, 9 – 11:30 a.m.
and 1 – 3 p.m.

Chincoteague Combined School

Thursday, Aug. 31, (9th Grade Orientation)

noon – 2 p.m.

Friday, Sept. 1, 9 – 11:30 a.m.
and 1 – 3 p.m.

The "Big 90"

I would like to thank everyone who had a part in my recent 90th birthday party.

Words cannot express how I felt and I can't thank everyone enough for all the calls, cards, gifts, kindness and love shown to me.

I would like to express my sincere thanks to Denise Bowden and Debbie (Betts) Bender who worked so hard to make my special day memorable. My love to both of you as two great friends who are like family to me.

It was such a happy occasion to see so many friends, family and loved ones to share my special day. I can never repay the love shown to me.

I thank God every day for my health and strength and for so many great friends.

With lots of love,

Helen P. Merritt

Ocean East REALTY

6373 Maddox Blvd.,
Chincoteague Island, VA

www.ChincoteagueOceanEast.com



1-866-406-3354 • 757-336-2222



Linda Budd



Vicky Thornton



Donna Jones



Janet Bernosky



Open House
Saturday, August 19, 2017
from 11 AM - 2 PM

4396 MAIN STREET
MLS # 45808 WATERFRONT HOME \$305,000
LR, K, DA, 2 BR, Mudroom, Bath, Attic, Shed,
Large Lot, Pier on Deep Water.

Hosted by Linda Budd, Associate Realtor,
GRI, ABR



MLS # 44626
Wildcat Ln.

Breathtaking vistas from this secluded natural setting.
3.34 acre waterfront property over looking Chincoteague
Bay. Three bedroom septic system installed.

\$207,000



MLS # 45367
Savage St.

Living room, eat-in kitchen, 2 bedrooms and bath most
furnishings convey, 3rd floor attic.
Established Vacation Rental.

\$144,000



MLS #44668
East Side Dr.

This beach home package includes a 2BR, 1BA stick built home,
with LR, DR and kitchen and a 12' x 60' mobile, with 2BR, 1 BA
and large enclosed porch. Views of Assateague Island.

\$225,000



MLS # 45109
Galleon Ct. Captain's Cove

This wooded lot would make a wonderful site for your new home.
3 bedroom certificate on file. Amenities included pools, exercise
room, Boat ramp /dock, golf, tennis, clubhouse and much more.

\$1,000



MLS # 45805
New Church

Vacant lot close to The Visitor Center and the Peaker
Electric Plant. Call or email for details to this property.

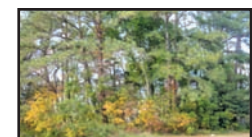
\$9,500



MLS # 43743
Deep Hole Rd.

Great starter home or as a seashore retreat! This
townhome has eat-in kitchen, living room, two
bedrooms, and two baths.

\$137,000



MLS # 44794
Mill Dam Rd.

Wallops Island Desirable building lot .68 of acre. close
to NASA, Chincoteague Island and Wallops Island.

\$32,000

Super Crossword

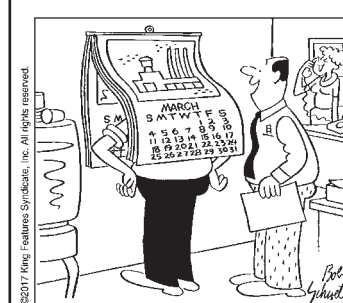
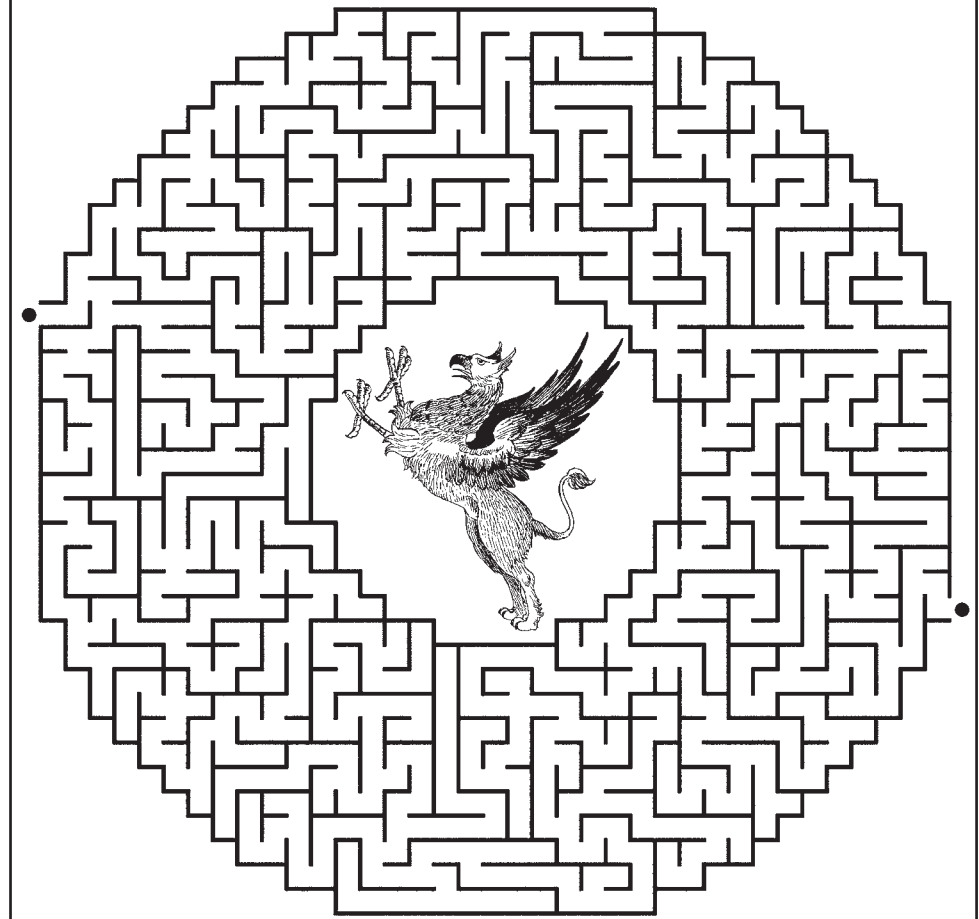
M-T SET

- ACROSS**
- 1 Comic Viking
6 It licenses lawyers
14 Habit-kicking programs
20 Florida city
21 It made Razr phones
22 Take a — (give a go)
23 Was glad to stick around?
25 New Orleans university
26 Outdated
27 Entertainer Zadora
29 Decreases
30 Grouch's cry
31 Monotonous predictions from mind readers?
36 Get all sudsy
40 Rho follower
41 Big beer buy
42 Colorful bird helping out?
46 Pop group — Tuesday
49 Untimely?
50 Hoop dangler
51 Conk
52 Powdery
- 54 Just make, with "out"
55 Book leaf
57 Snap a pic of an animated character?
61 See
63 With
61-Across, Yankee who won the 1997 Silver Slugger Award
64 Nels or Nellie on "Little House on the Prairie"
65 Massive coup?
69 1980s game consoles
72 Do, —, fa, sol, la, ti, do
73 Oratorical art
77 Steering rod on a purple dinosaur's boat?
80 Harvard rival
81 Sch. URL ending
82 Consecrate
83 Suffix with Vietnam
84 Slalom, e.g.
- 85 Distance unit in astron.
86 According to
87 A trio of fuddy-duddy ducks?
93 Sandal, e.g.
95 Go get
96 Late, great crossword puzzle writer
97 Buying candy for trick-or-treaters, e.g.?
102 "Tsk!"
103 Edgar — Poe
104 — -Blo fuse
105 Deprived of parents
110 Bread units
112 Flooring unit that can be installed in about 7% of an hour?
117 Intertwine
118 Distribution
119 Hair tint stuff
120 Like freshly baked
110-Across
121 Spruced up
122 Like a cliff
- DOWN**
- 1 Twinkle alternative
2 Hail —
3 Spaces
4 Rival of lams
5 Relative of a trolley
6 Rocker Patty
7 Lug along
8 — minimum
9 Craggy crest
10 Go astray
11 Young male, in hip-hop
12 A, in Hebrew
13 Halves of diameters
14 Q-U link
15 Liszt works
16 Many a salt, chemically
17 Manual calculators
18 Swahili's subfamily
19 Geyser
24 Hopped
28 Say "OK" to
31 Brad of films
32 Cpl.'s boss
33 Singer Sumac
34 Isn't unable
35 Road goo
36 City of witch trials
- 37 Japanese port city
38 Daisy lookalike
39 Flaky treat
40 Allergic reaction
43 Wrath
44 "I could write —"
45 Obtained
46 General — chicken
47 "Am — early?"
48 NFL's Swann
52 Strike out
53 In — (gestating)
55 Sprites
56 Edgy
57 Sword stuff
58 Blackjack request
59 Studio alert
60 Shanty
62 Aquatic birds
66 1957 Bobbettes hit
67 Singer Badu
68 Atheist Madalyn Murray —
69 "Dancing Queen" band
- 70 Like a giant
71 District
74 Label again
75 Rustic verse
76 Jinx
78 Small giggles
79 Medit. nation
84 Use a straw
85 Grazing spot
87 AAA offering
88 Young newt
89 Salty waters
90 Gallon divs.
91 Spew forth
92 Restraints
93 Works hard
94 Candid
97 "Roots" novelist Alex
98 By oneself
99 Camel kin
100 Spritelike
101 Gallows loop
102 Evened (up)
105 Years ago
106 Toiling away
107 — -to-five
108 In addition
109 Low in pitch
111 Reticent
113 D.C.'s home
114 Road furrow
115 West in film
116 Small hotel

1	2	3	4	5	6	7	8	9	10	11	12	13	14	15	16	17	18	19		
20					21								22							
23				24									25							
26										27	28		29							
			30					31	32	33	34		35							
36	37	38	39			40							41							
42						43					44	45				46	47	48		
49					50						51			52	53					
54				55	56					57	58	59		60						
61			62							63				64						
			65							66			67	68						
69	70	71						72									74	75	76	
77						78	79					80					81			
82						83						84					85			
86								87			88	89	90			91	92			
				93	94						95					96				
97	98	99							100	101						102				
103								104						105			106	107	108	109
110																				
117																				119
120																				122

Mega Maze

©2017 King Features Syndicate, Inc.



"Guess you're pretty focused on your upcoming _____"

SCRAMBLERS

Unscramble the letters within each rectangle to form four ordinary words. Then rearrange the boxed letters to form the mystery word, which will complete the gag!

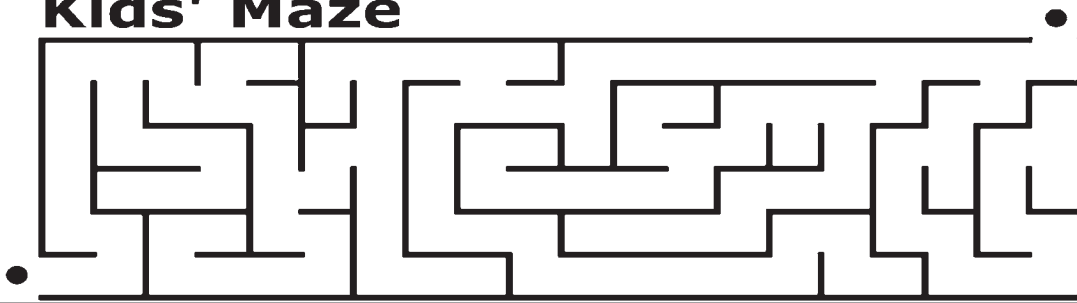
- Harsh
RESEVE
- Bend
CEASER
- Sniff
HEALIN
- Sturdy
TURBOS

TODAY'S WORD

The Hitching Post

To advertise in the Hitching Post call
757-789-7678 or e-mail Troy at
ads@easternshorepost.com or
Sam at sam@easternshorepost.com

Kids' Maze



Puzzles4Kids

by Helene Hovanec

CRISSCROSS – ELEMENTARY SCHOOL*

Each word will fit into one spot in the grid. Use the starting letters as a guide and fit each word into its spot. All words will be used, so cross off each one after you put it into the grid.

3 Letters

EYE
LYE
NET
TAR

4 Letters

ACHE
HALO
TEEN
TELL
YELL

5 Letters

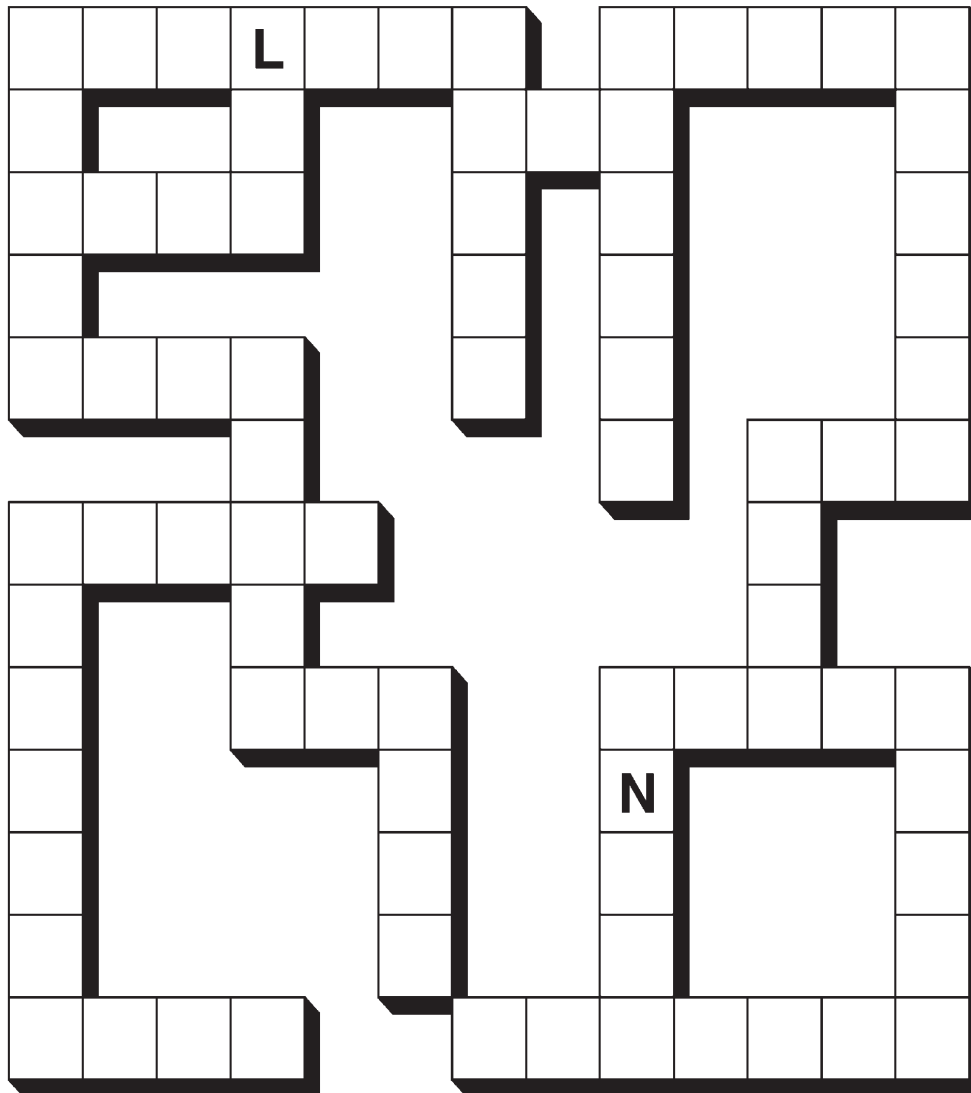
LASER
MELON
OCEAN
REACT
SNORE
SOLAR
TEACH
YEAST

6 Letters

METEOR
NECTAR

7 Letters

ELEMENT
LOOSELY
TROLLEY



*All words are formed from the letters in ELEMENTARY SCHOOL



1. GENERAL KNOWLEDGE: What is the international radio code word for the letter "W"?

2. LITERATURE: What famous mystery novelist sometimes wrote under the pseudonym Mary Westmacott?

3. U.S. PRESIDENTS: Who was the tallest of the U.S. presidents?

4. LANGUAGE: What is a gerund?

5. ANIMAL KINGDOM: What is a group of raccoons called?

6. HISTORY: The United States purchased Alaska from which country in 1867?

7. MEDICAL: What happens when someone experiences obdormition?

8. U.S. STATES: Which is the largest U.S. state by area?

9. GAMES: How many tiles are involved in the game of mahjong?

10. FAMOUS QUOTES: What 20th-century playwright once said, "I like long walks, especially when they are taken by people who annoy me"?

1. Whiskey
2. Agatha Christie
3. Abraham Lincoln, at 6 foot, 4 inches
4. A verb that functions as a noun and ends in "ing," such as swimming or asking.
5. A gaze
6. Russia
7. An arm or leg falls asleep
8. Alaska, which is more than twice the size of Texas
9. 144
10. Noel Coward

ANSWERS

© King Features Synd., Inc.

Chincoteague Tennis Class Participants Have a Ball



Photos courtesy of Chincoteague Community Tennis Association

Tennis Anyone? Tennis Everyone!

On Thursday, Aug. 10 the Chincoteague Community Tennis Association (CCTA) held the second of two free tennis clinics at the Veterans Memorial Park tennis courts.

Lessons were offered for adults and children and both were well attended as several residents and visitors to Chincoteague took advantage of the opportunity to improve their game.

Anyone interested in playing tennis and or joining the CCTA please contact Peter Lukacs at communitytennisassoc.2013@gmail.com or by calling 301-370-8439.



Recycle this newspaper



August 21 Celestial Show Will Eclipse All Others

By Linda Cicaira

The first coast-to-coast total solar eclipse in nearly a century will darken the skies Monday, Aug. 21, on the Eastern Shore where a partial view of the spectacle or 81.5 percent will be visible. The maximum eclipse will occur when the moon covers part of the sun at about 2:45 p.m.

The NASA Wallops Flight Facility Visitor Center, on Route 175, also known as Chincoteague Road, will conduct free activities from noon to 4:30 p.m. that day, including providing free glasses for safe viewing of the eclipse and a NASA TV live broadcast from 1 to 4 p.m. The show will feature NASA experts along the path of totality. Live feeds from NASA aircraft, balloons and the International Space Station are planned. There will also be solar-themed movies. Food and beverages will be sold.

In addition to the visitor center event, satellite locations will be offered at Assateague Island National Seashore/Toms Cove Visitor Center and at the Assateague Visitor Center, in Maryland. The events are funded in part through the 2015 Competitive Program for Science Museums, Planetariums, and NASA. For a full list of NASA coverage, programming and activities, go to <https://eclipse2017.nasa.gov/>

The total eclipse will cross the country in a 70-mile-wide stretch from Oregon to South Carolina. In the rest of North America and parts of South America, Africa, Europe and Asia, a partial eclipse will be visible.

About 12 million people live in the band of totality. Estimates are calling for that to double on Aug. 21. About 25 million people live within a day's drive. So make sure you make room reservations as many hotels have been booked for months or even years.

The moon orbits an average of 239,000 miles from Earth, the perfect distance to seem about the same size as the much-larger sun. They line up about once every 18 months.

At most, the moon will completely cover sun in the main stretch of the U.S. for 2 minutes and 40 seconds. The length of view at the edge of the path will decrease to as little as a few seconds.

The moon's rough terrain influences what Earthlings will be able to see. As the moon covers the sun, light will shine through the lunar valleys forming what is known as Bailey's beads or bright points of light that signal the beginning and the end of totality. The moon's surface also shapes the shadow, called the umbra. These edges warp even more as they pass over Earth's mountain ranges.

"Visualizers used data from NASA's Lunar Reconnaissance Orbiter coupled with NASA topographical data of Earth, to precisely map the upcoming eclipse in unprecedented detail," according to an agency report.

PHOTO TIPS

Safety should be your first priority. You'll need the eclipse glasses to protect yourself and a solar filter to shield the camera. Keep your glasses on for all portions

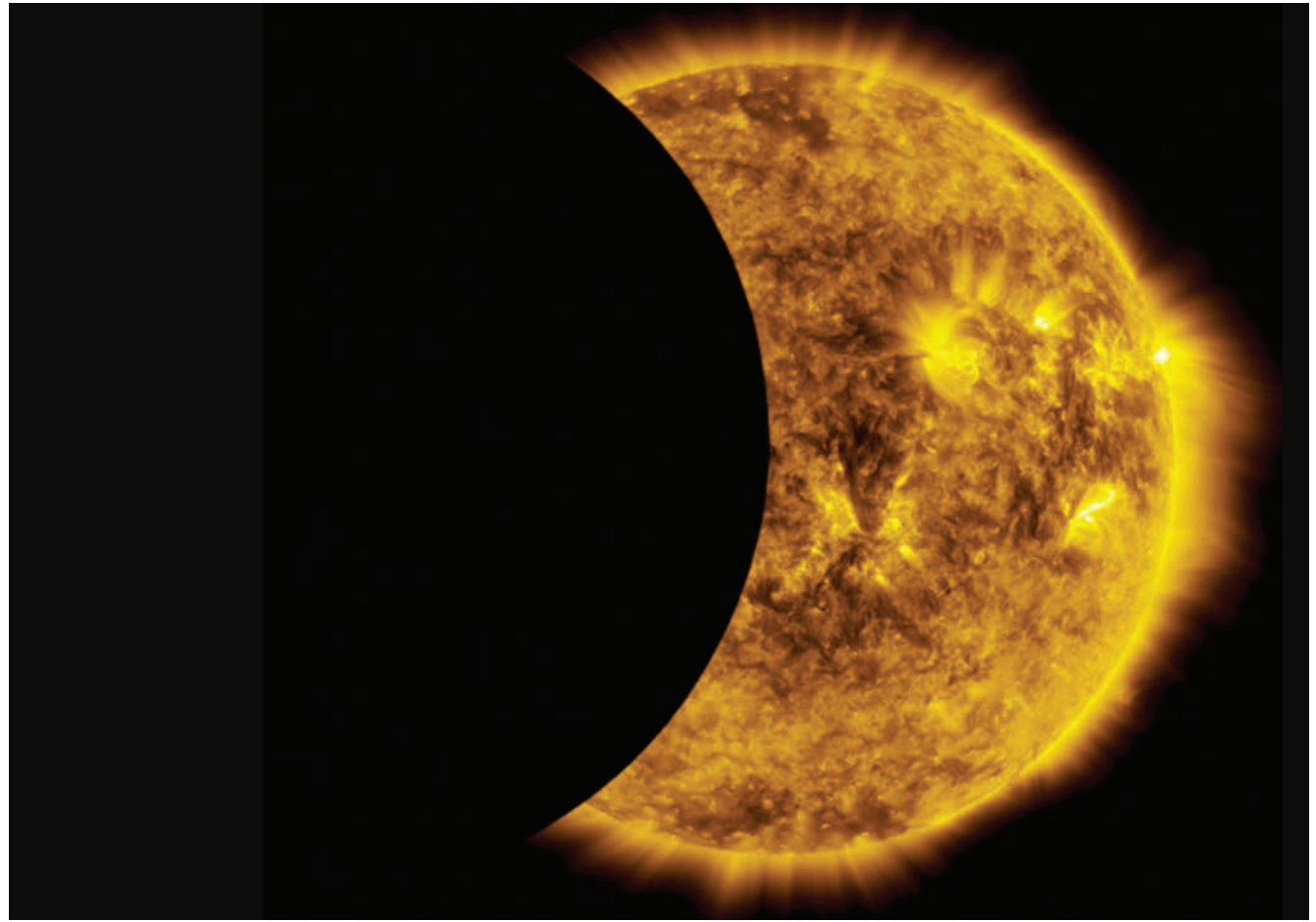


Photo taken from a NASA video of an eclipse.

of the eclipse. (If you travel to the total eclipse zone, remove the camera screen when the moon totally blocks the sun so you can catch the sun's outer atmosphere, or corona.) Solar filters must be attached to the front of any telescope, binoculars, camera lens, or other optical device. Do not look at the uneclipsed or partially-eclipsed sun through an unfiltered camera, telescope, binoculars, or other optical device. Similarly, do not look at the sun through a camera, a telescope, binoculars, or any other optical device while using your eclipse glasses or handheld solar viewer — the concentrated solar rays will damage the filter and enter your eye(s), causing serious injury.

REMEMBER

Skywatchers should NEVER look at a partial solar eclipse without proper eye protection. Looking directly at the sun, even when it is partially covered by the moon, can cause serious eye damage or blindness. In the path of totality (where the sun will be totally blocked by the moon), it is safe to view the sun with the naked eye during the approximately three minutes when the sun is completely obscured. None of the Eastern Shore of Virginia is within the path of totality, so local viewers should plan to wear appropriate eye protection at all times.

BEWARE

Reports have been made of sales of unsafe or counter-

feit solar-viewing glasses. Be sure to purchase ones approved by the American Astronomical Society, that meet ISO 12312-2 safety standards (International Organization for Standardization). To be safe, the glasses should not allow more than 0.00032 percent of the sun's light through the filters. And the filters must be free of defects like scratches, bubbles and dents. Handheld viewers must be large enough to cover both eyes.

Eclipse glasses and sunglasses may look similar, but they are made of very different materials. You should never look directly at the sun while wearing sunglasses, no matter how tinted your lenses. According to NASA, they let in "thousands of times too much sunlight."

Solar filters are polyester film coated in aluminum, or black polymer, a flexible resin infused with carbon particles. Both types of filters will reduce visible light down to safe levels.

Some welding filters will provide protection, but make sure you have the correct kind before trying it. The only ones that are safe for direct viewing of the Sun are those of Shade 12 or higher. These are much darker than the filters used for most kinds of welding. Make sure you know the filter's shade number. If it's less than 12 (and it probably is), don't even think about using it to look at the sun.



LONG & FOSTER
REAL ESTATE, INC.

CHINCOTEAGUE & CAPTAINS COVE



REDUCED!
3BR/2BA Renovated
Near town, LRG scr'd porch
& workshop \$226,500



REDUCED!
Beautiful WF Townhome
w/shared pier. MBR Suite!
Amazing Sunsets! \$450,000

LONG & FOSTER
Home Seller & Home Buyer Services
Prosperity Mortgage * Sage Title
L&F Home Warranty Program
L&F Home Insurance

Call us for info about these services!



Beautiful Country Colonial
Great acreage, lrg. Workshop!
Chinco. Sch. District. \$239,900



SUNSET BAY CONDOS
We have several units for
sale starting at \$365,900!



REDUCED!
Oyster Bay II Ranch Home
New dishwasher & fresh
paint! \$239,500



Country Escape
3BR & Bonus Room on one
acre! \$145,000



3BR WATERFRONT in Cap-
tains Cove. Pool, golf and
Marina Club \$249,900



4BR Renovated Farmhouse
New floors, new appliances!
You dream home! \$169,000



2BR Island Cottage
Located close to town
\$126,000



2BR/DEN Water Views
Deeded water access! 5-
star features! \$319,000



3BR/2BA Mobile Home
Large detach. Garage &
screened porch!! \$136,800



3BR/2BA Renovated
Newer HVAC, new flooring,
new MBA!! \$220,000



3BR/2BA Ranch
Scr.Porch, Deck & More
\$178,000

CHRISTIE'S
INTERNATIONAL REAL ESTATE

2 Offices to Serve You!

CHINCOTEAGUE

6426 Maddox Blvd.
(next to PNC Bank)

757/336-5100

Open Sundays!

CAPTAINS

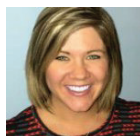
COVE

37054 State Line Rd.

(on the right)

757/824-5195

LONGANDFOSTER.com



Meghan Oliver
Associate Broker
757/894-0798



John McGoldrick
Associate Broker
757/710-3771



Jenny Barker
Sales Associate
917/612-8799

Experience the greatest alternative to hotels.

CHOOSE A VACATION RENTAL HOME for your next vacation!



CHINCOTEAGUE
RESORT
VACATIONS



Stay for a few days, a long weekend, a week — it's up to you. Save \$\$\$ and enjoy room to move around, private bedrooms, fully stocked kitchens and all the extra touches. Something for every budget, from delightful little cottages to 5-star accommodations. **CALL or BOOK ONLINE 24/7!**

Download our mobile app - Chincoteague Island Vacations

Chincoteague Resort Vacations * 6426 Maddox Blvd.
757/336-3100 * ChincoteagueResort.com



vacation
rental
managers
association